



Parker Place, Suffolk, CO10 1YG

Rent - £850 PCM Deposit - £980

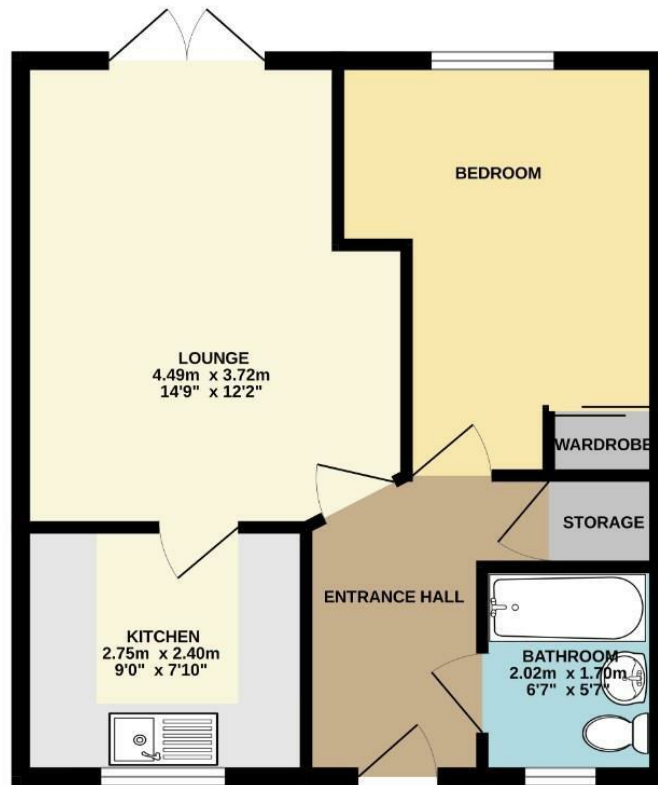
One-bedroom ground floor flat located in Parker Place, Sudbury recently refurbished with new carpets throughout. Allocated parking space and communal gardens. Viewing advised

- GROUND FLOOR APARTMENT
- ONE GOOD SIZED BEDROOM
- RESIDENTIAL LOCATION
- FAMILY BATHROOM
- ALLOCATED PARKING
- COMMUNAL GARDEN
- GAS HEATING - ENERGY RATING C
- 484SQ METRES
- SORRY NO PETS/COUNCIL TAX BAND A
- AVAILABLE NOVEMBER



Council Tax Band: A - EPC Rating: C 79

GROUND FLOOR
42.4 sq.m. (456 sq.ft.) approx.



TOTAL FLOOR AREA: 42.4 sq.m. (456 sq.ft.) approx.
Whilst every attempt has been made to ensure the accuracy of the floorplan contained herein, measurements of doors, windows, rooms and any other items are approximate and no responsibility is taken for any error, omission or misstatement. This plan is for illustrative purposes only and should be used as such by any prospective purchaser. The services, systems and appliances shown have not been tested and no guarantee as to their operability or efficiency can be given.
Made with Metrepro 5/2025

